

**SINOAMIGO**

*Enjoy the connection*

## STS-7 Series RECESSED FLIP-UP DESK OUTLET

• STS-7/4F • STS-7/5F • STS-7/6F

SINOAMIGO ELECTRIC CO.,LIMITED

A5 building, Sulv industrial zone,  
Yueqing city, Zhejiang province 325604

Tel:0086-577-6271 9577

Fax:0086-577-6173 0882

Email:mkt@sinoamigo.com

## STS-7 Recessed Double-Sided Flip-up Desk Outlet

### ■ KEY FEATURES:



#### **Sleek, contemporary appearance:**

The combination of the sleek aluminum profile and rounded corners gives the design a clean and neat appearance, and the shape makes it the perfect workstation outlet for all your home or office needs.



#### **Cable pass-through with brush seal:**

Equipped with brush seal which allows cables to pass through the unit whilst in the closed position and prevents dust infiltration.



#### **Double-sided flip-up cover design with self-damping and slow descent:**

The product features a double-sided flip-up cover, with each side opening up to 90°. When closing, the cover is damped and descends slowly. The panel flips open easily, providing better access to outlets from either side, creating a more functional and organized desk.

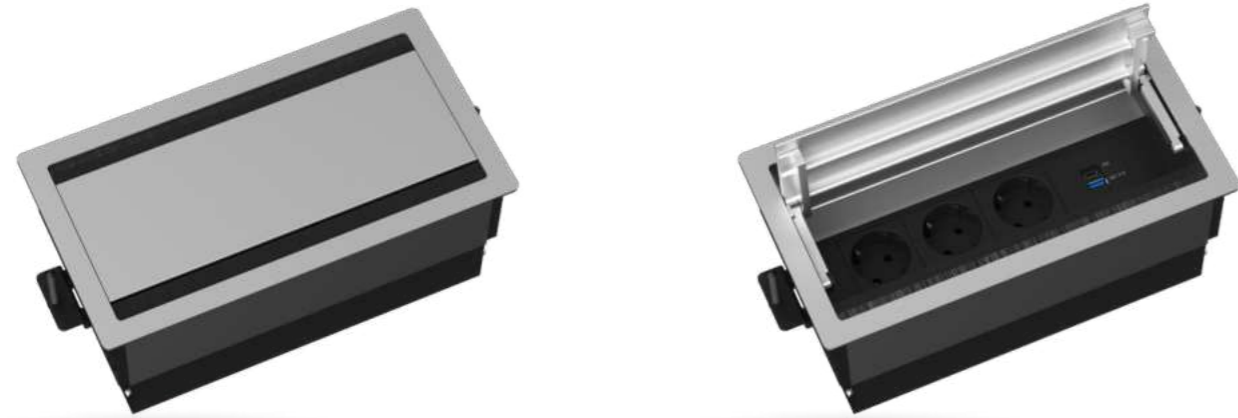


#### **Two mounting methods are available:**

The product can be mounted using either a mounting bracket for any material desk with a thickness between 10 ~ 60mm, or by self-tapping screws for wooden desks, making it suitable for a variety of installation scenarios.



## STS-7/4F Series Recessed Double-Sided Flip-up Desk Outlet



▲  
STS-7S/4F

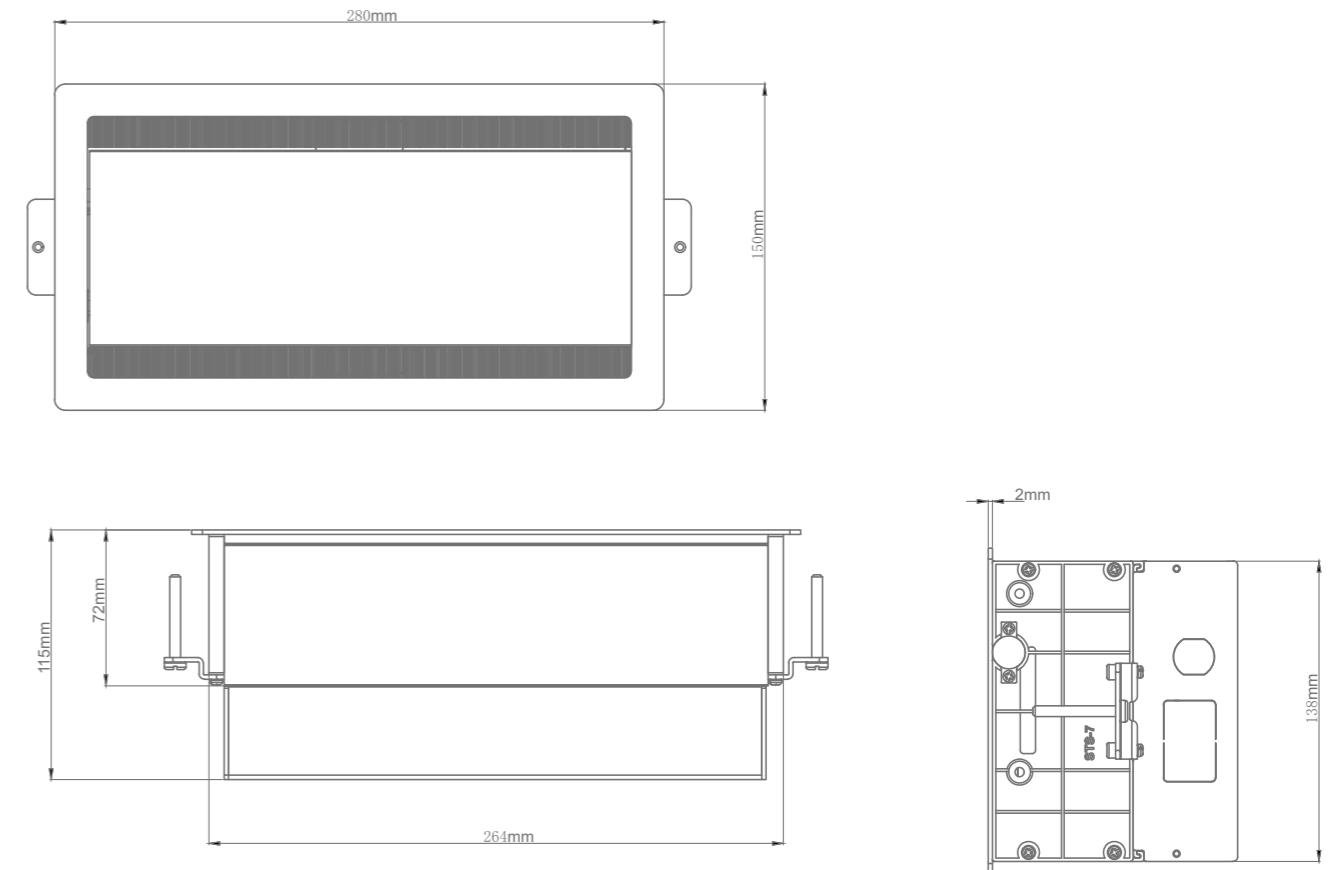


### ■ SPECIFICATIONS:

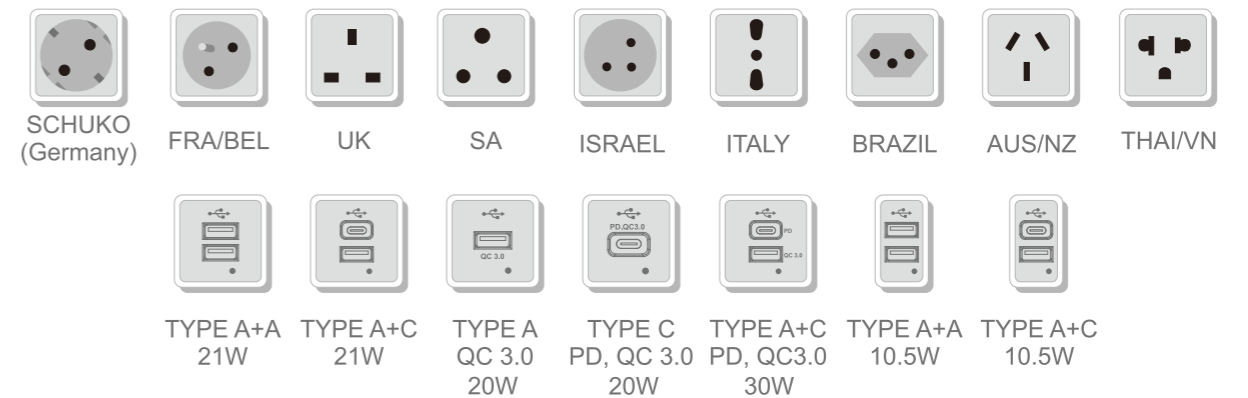
<b>Model No:</b>	STS-7S/4F	STS-7B/4F	STS-7W/4F	STS-7GY/4F
<b>Colors:</b>	Silver	Black	White	Gray
<b>Material:</b>	PVC (Base Box and Socket Card Frame) / Aluminum Alloy (Product Housing)			
<b>Version :</b>	4 ways			
<b>Module Capacity*:</b>	8 (Type 45 series)			
<b>Cutout(mm):</b>	266x140			
<b>Ideal for:</b>	Office Spaces, Conference Rooms, Educational Institutions, Hospitality Environments, Co-working Spaces and Home Offices			

## STS-7/4F Series Recessed Double-Sided Flip-up Desk Outlet

### ■ DIMENSIONS:

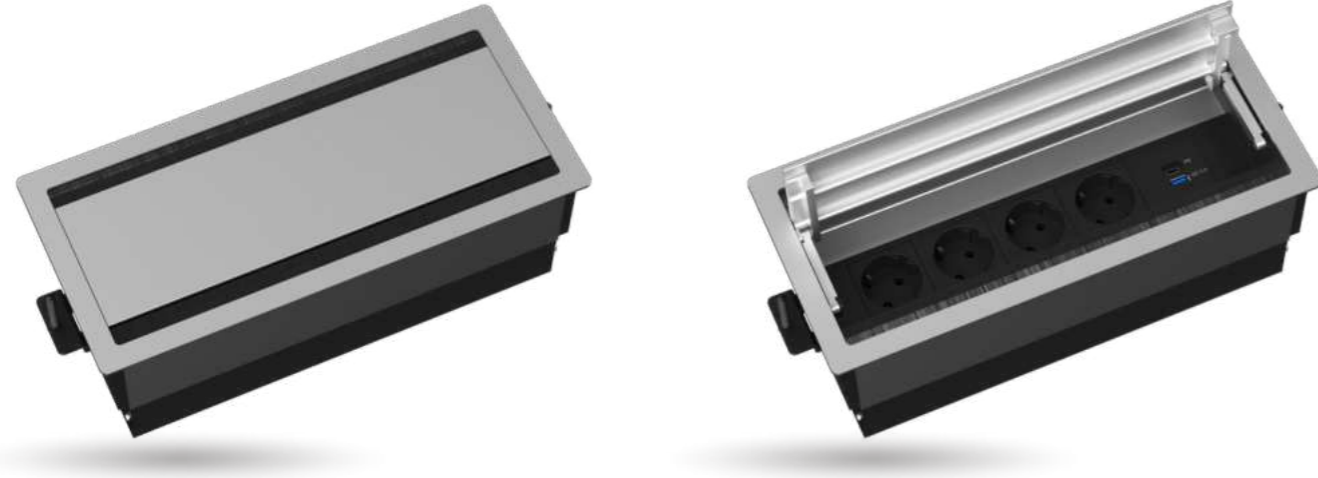


### ■ EXTENSIVE RANGE OF MODULE OPTIONS:



\*To know more about the modules compatibility, please contact our sales representative.  
\*Product images are for illustrative purposes only and may differ from the actual product.

## STS-7/5F Series Recessed Double-Sided Flip-up Desk Outlet



▲  
STS-7S/5F

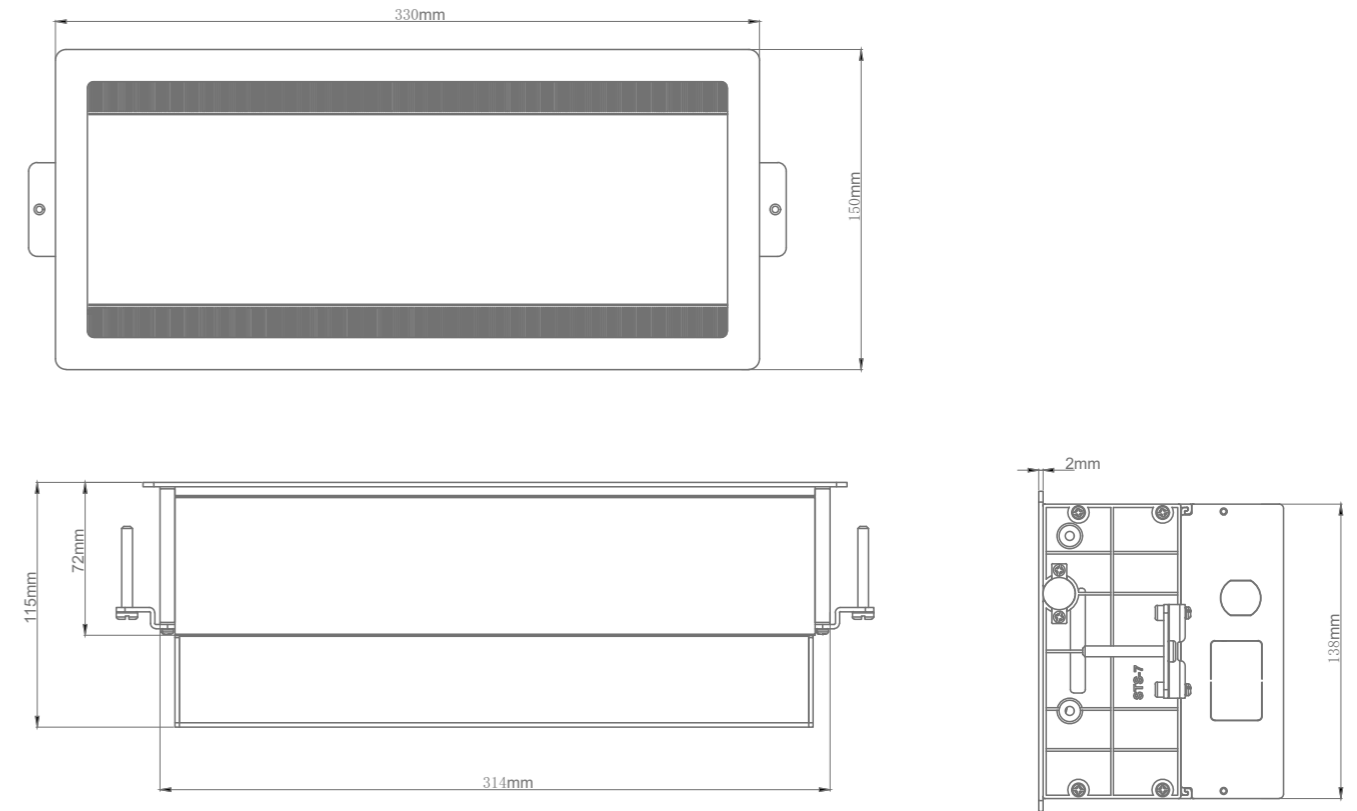


### ■ SPECIFICATIONS:

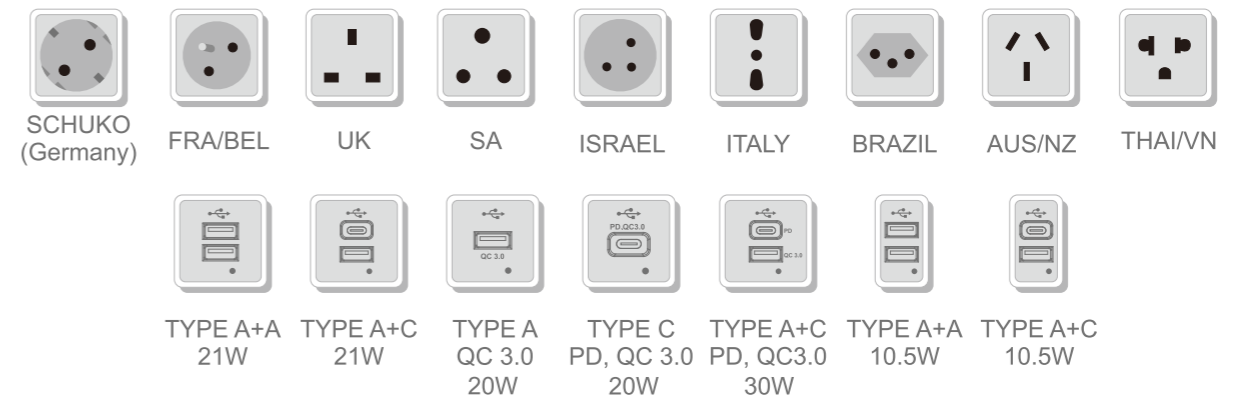
<b>Model No:</b>	STS-7S/5F	STS-7B/5F	STS-7W/5F	STS-7GY/5F
<b>Colors:</b>	Silver	Black	White	Gray
<b>Material:</b>	PVC (Base Box and Socket Card Frame) / Aluminum Alloy (Product Housing)			
<b>Version :</b>	5 ways			
<b>Module Capacity*:</b>	10 (Type 45 series)			
<b>Cutout(mm):</b>	316x140			
<b>Ideal for:</b>	Office Spaces, Conference Rooms, Educational Institutions, Hospitality Environments, Co-working Spaces and Home Offices			

## STS-7/5F Series Recessed Double-Sided Flip-up Desk Outlet

### ■ DIMENSIONS:

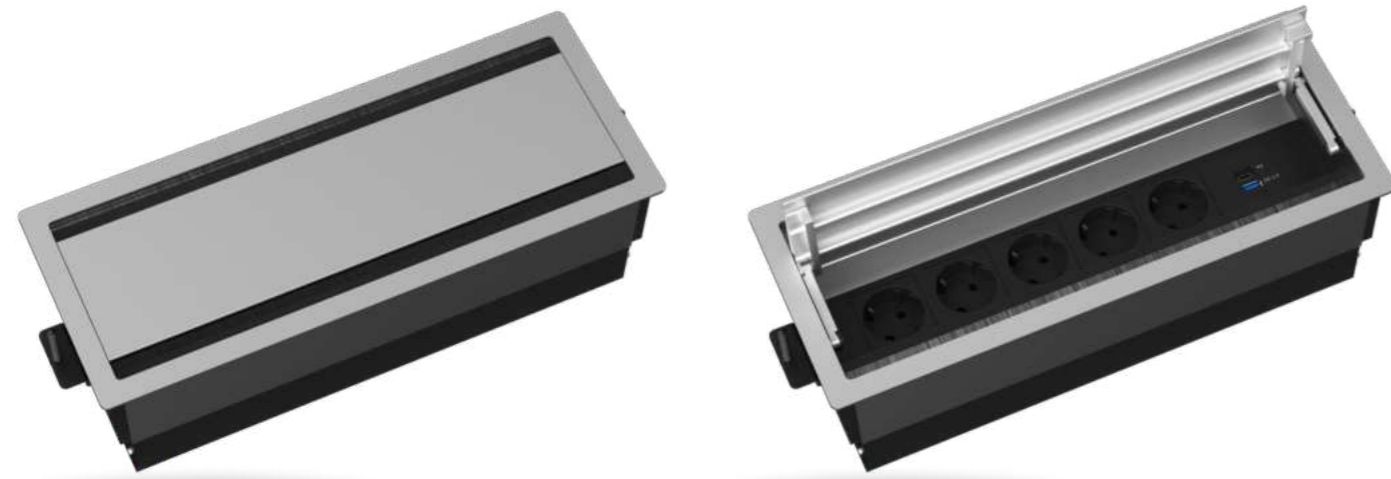


### ■ EXTENSIVE RANGE OF MODULE OPTIONS:



\*To know more about the modules compatibility, please contact our sales representative.  
\*Product images are for illustrative purposes only and may differ from the actual product.

## STS-7/6F Series Recessed Double-Sided Flip-up Desk Outlet



▲  
STS-7S/6F

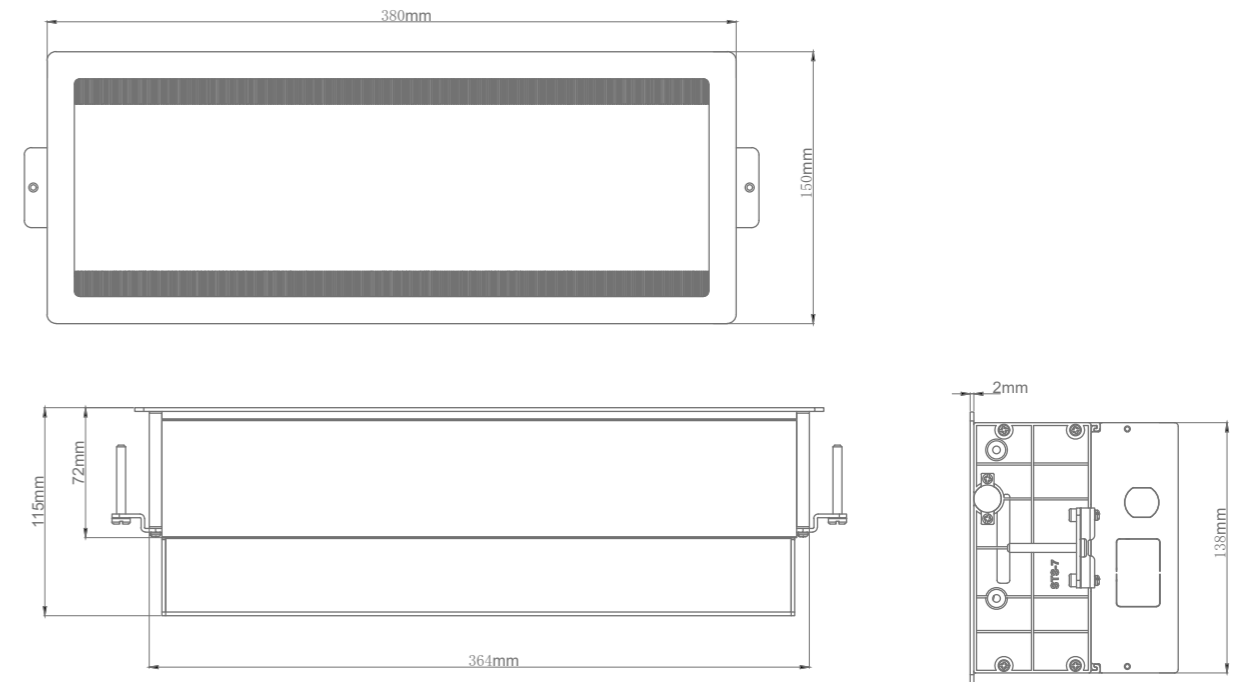


### ■ SPECIFICATIONS:

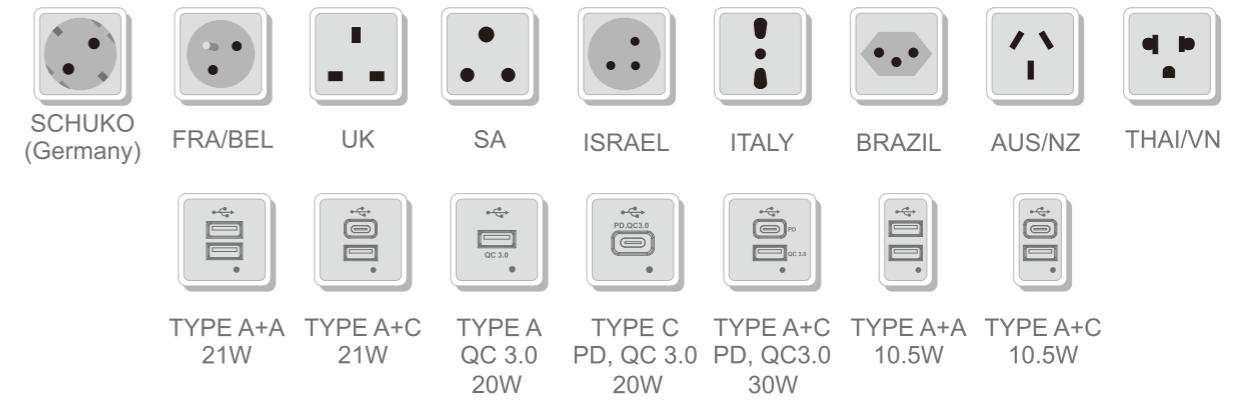
Model No:	STS-7S/6F	STS-7B/6F	STS-7W/6F	STS-7GY/6F
Colors:	Silver	Black	White	Gray
Material:	PVC (Base Box and Socket Card Frame) / Aluminum Alloy (Product Housing)			
Version :	6 ways			
Module Capacity*:	12 (Type 45 series)			
Cutout(mm):	366x140			
Ideal for:	Office Spaces, Conference Rooms, Educational Institutions, Hospitality Environments, Co-working Spaces and Home Offices			

## STS-7/6F Series Recessed Double-Sided Flip-up Desk Outlet

### ■ DIMENSIONS:



### ■ EXTENSIVE RANGE OF MODULE OPTIONS:



### ■ INSTALLATION STEPS:



**STEP 1**  
Make a rectangular cutout (Size:266mm\*140mm) on your desk or table surface.

**STEP 2**  
Feed power cord through the cutout until the full length of cable has passed through. Mount the unit into the cutout and besure it is fully leveled onto the surface.

**STEP 3**  
When in place, screw the four screws into the mounting bracket until they positioned against the underside of the desktop and the unit is secured to the desk.

**STEP 4**  
Open the top cover of the product. Fix the product to the table by screwing in the self-tapping screws on both sides.

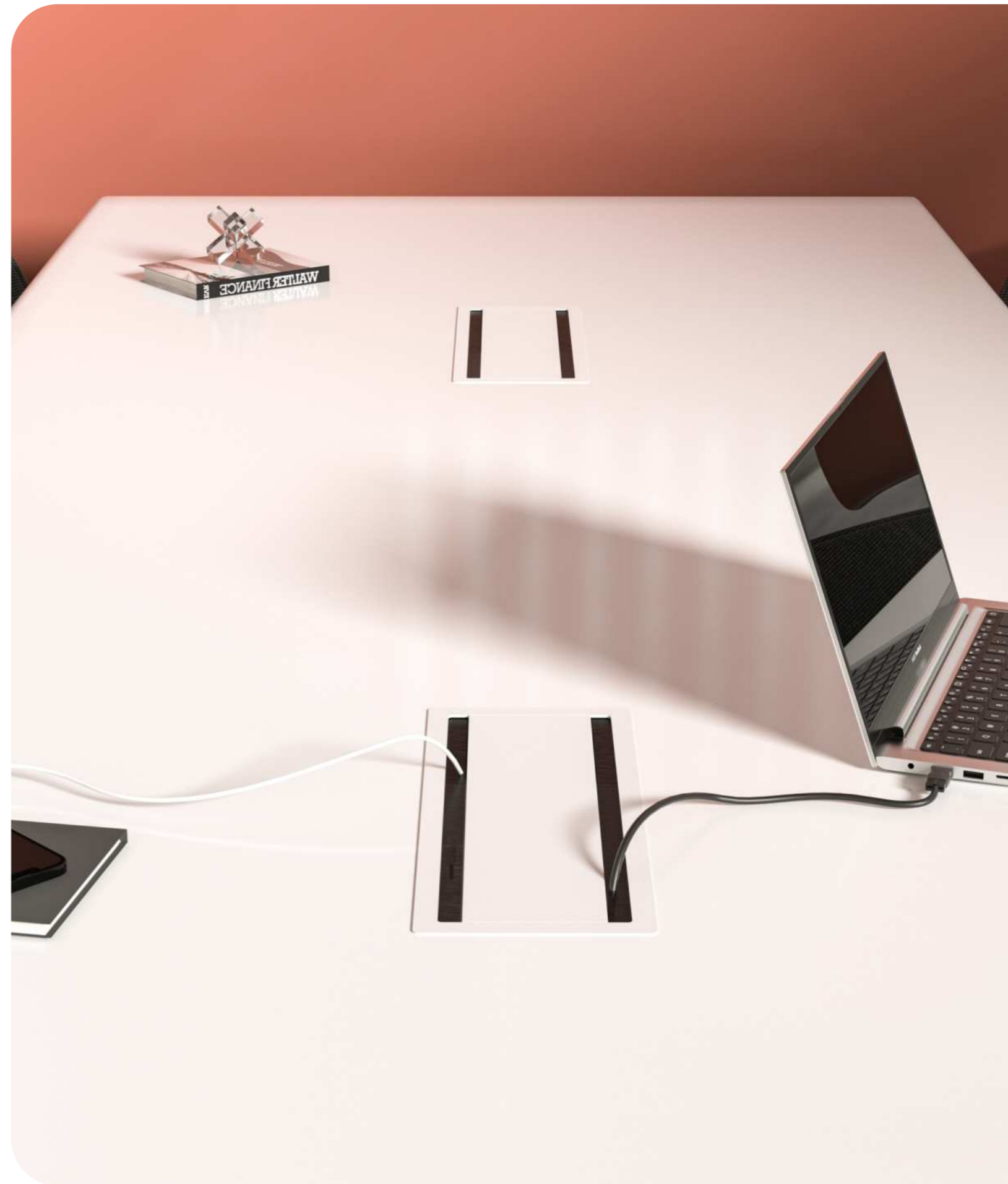
**STEP 4**  
Plug in the power cord into an applicable power outlet and the unit is ready to use.



*Co-working Spaces and Home Offices*



*Office Spaces*



*Conference Rooms*